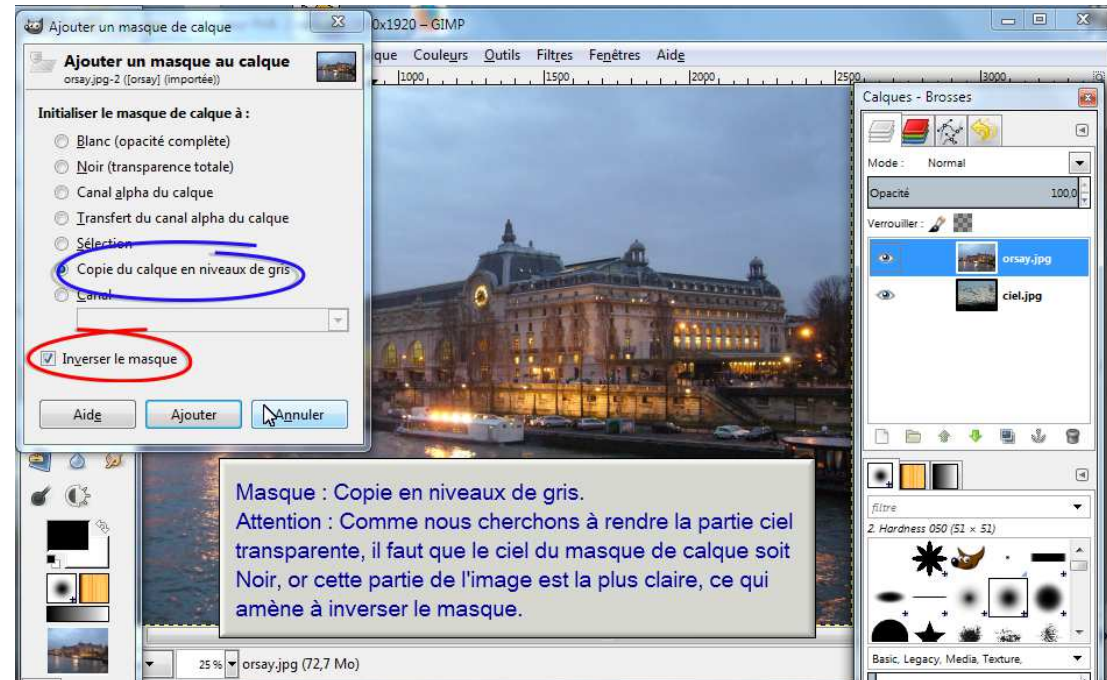
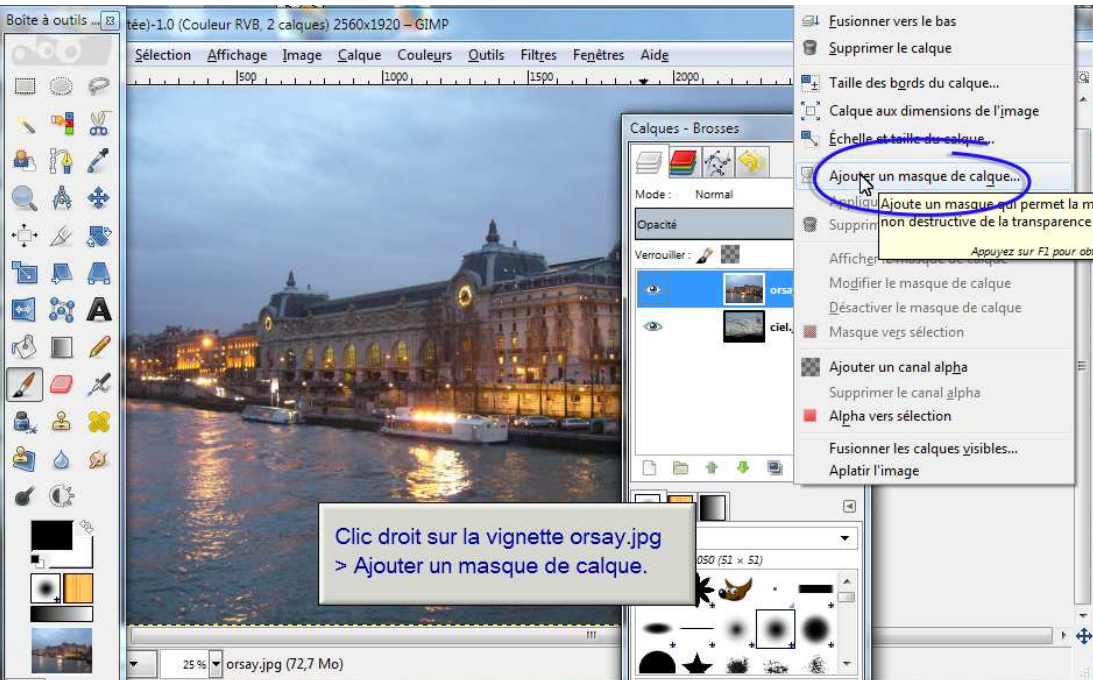
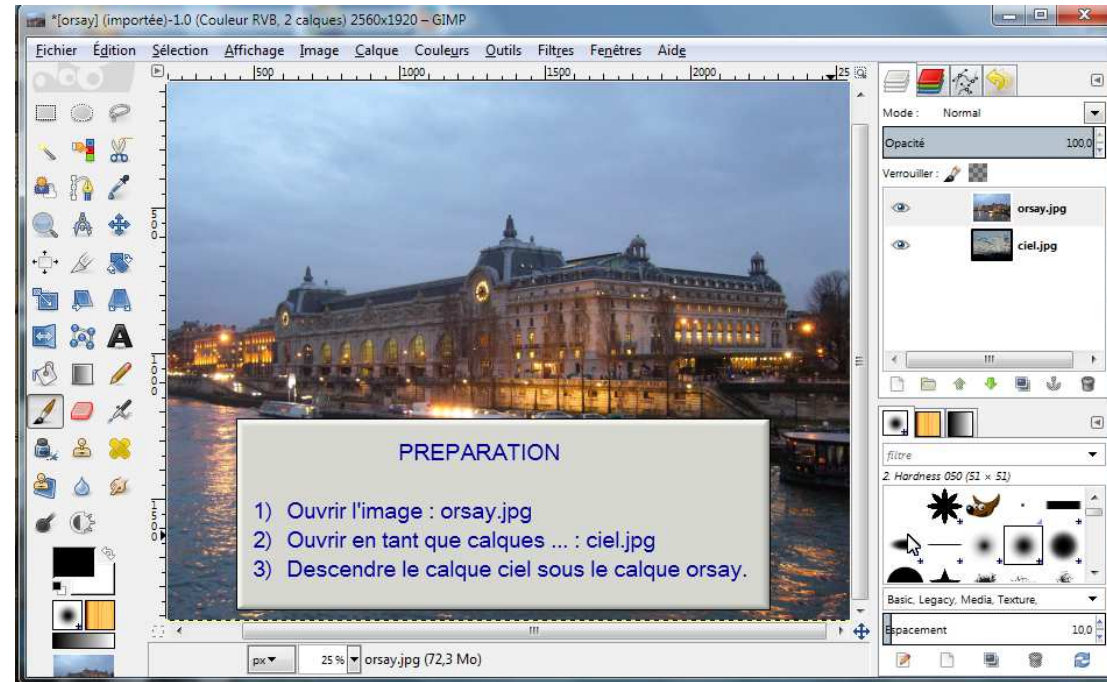
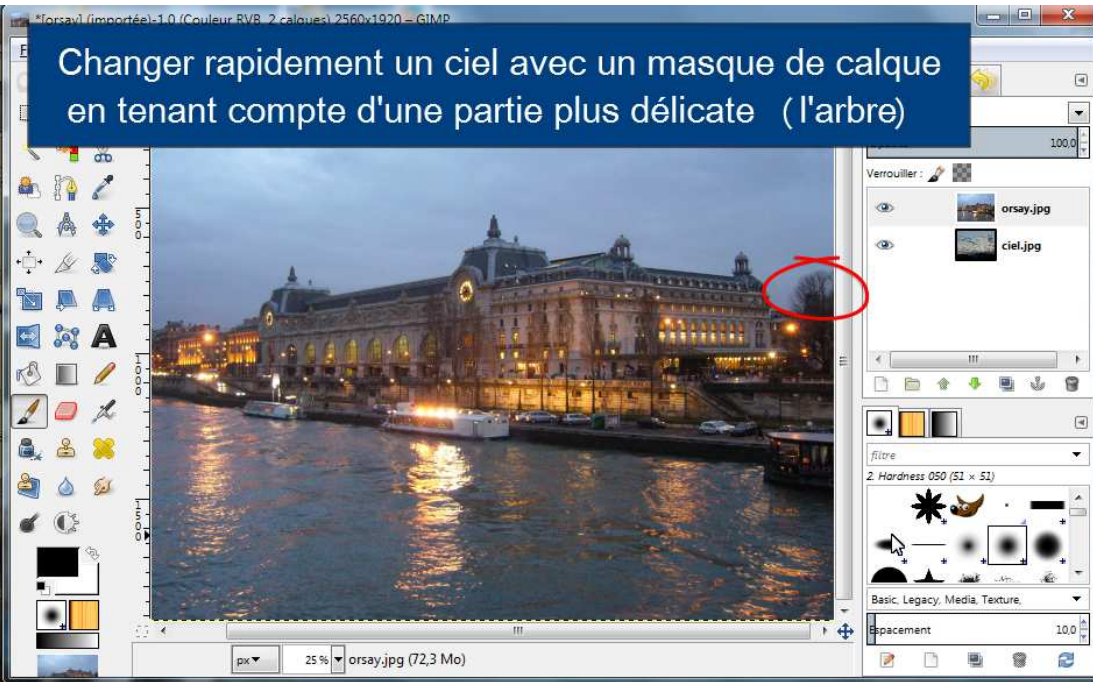
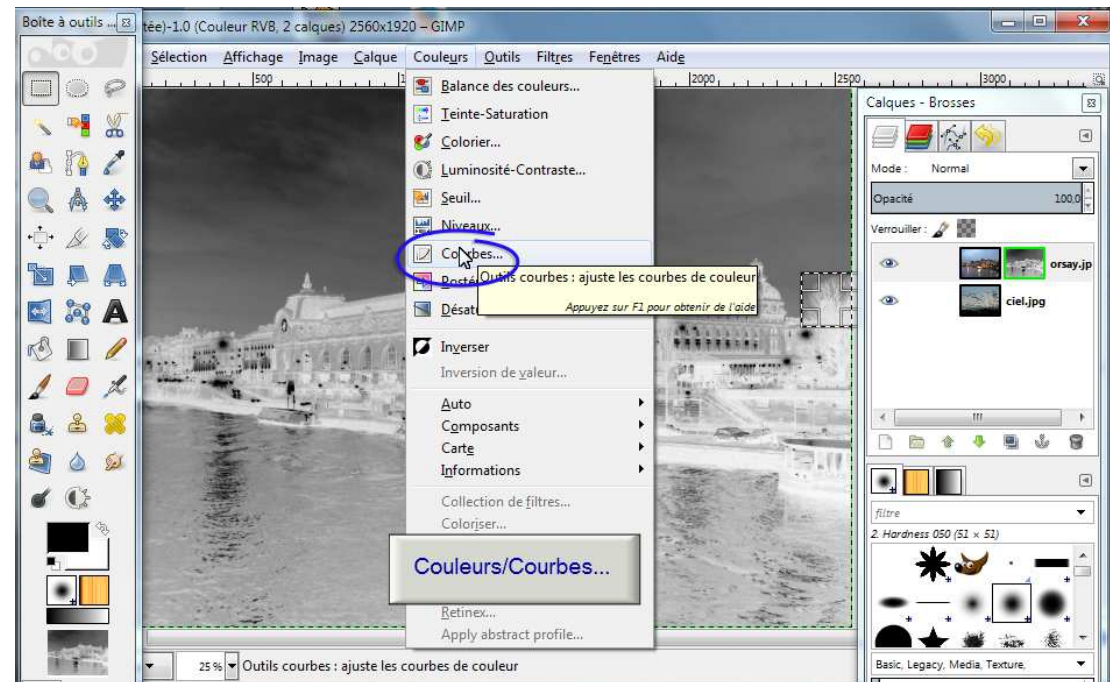
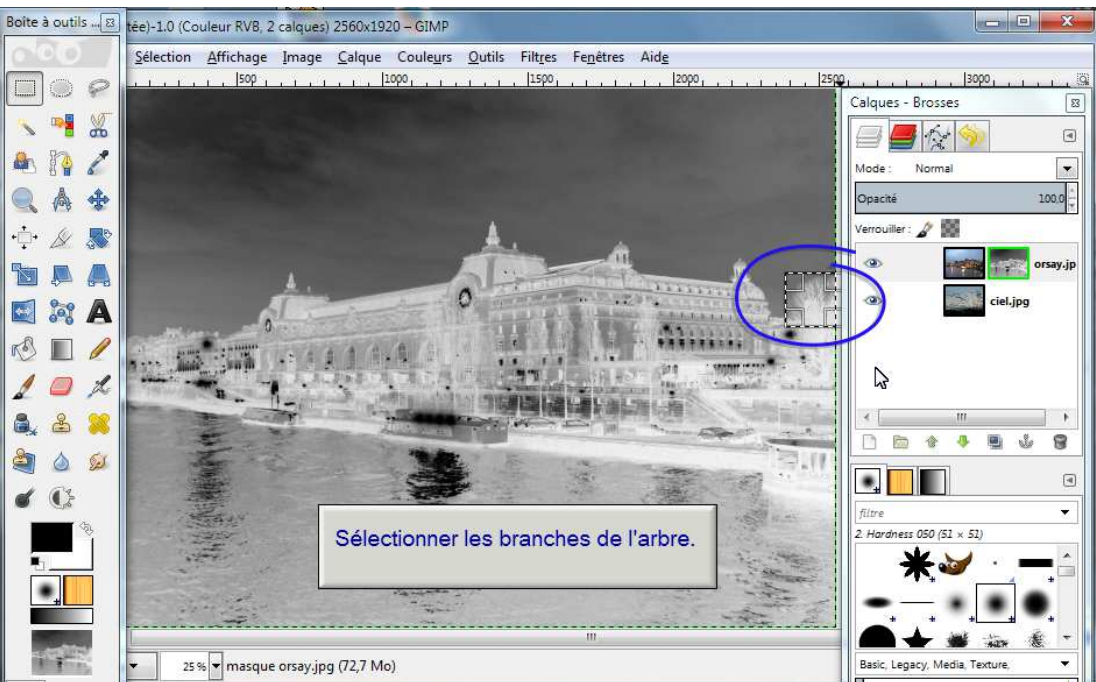
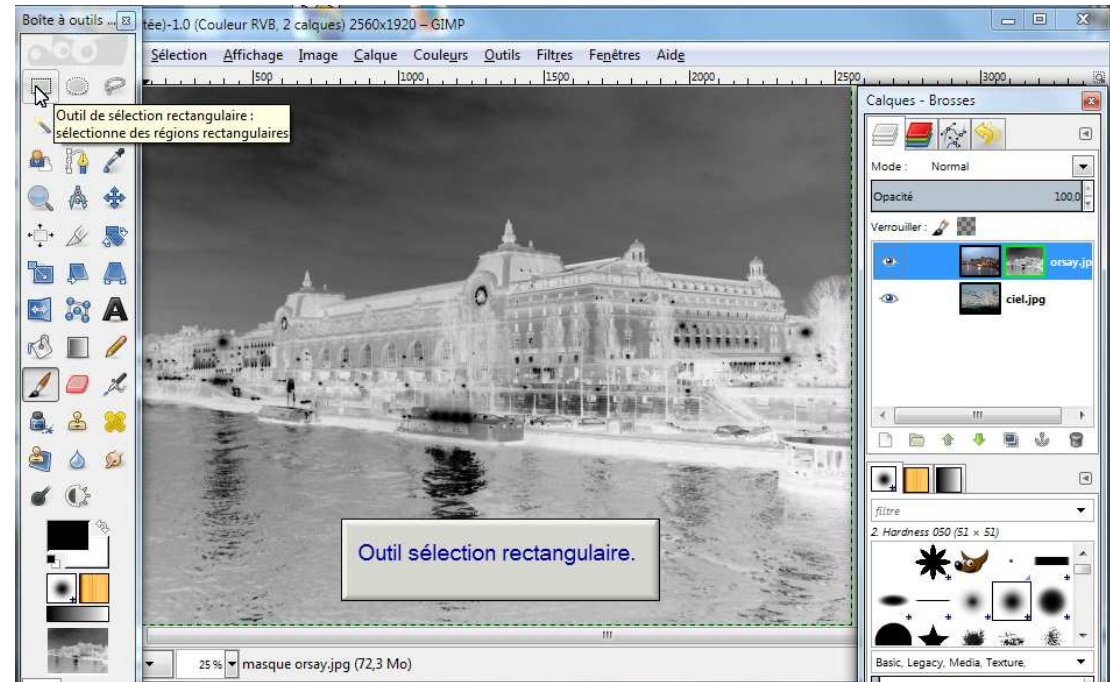
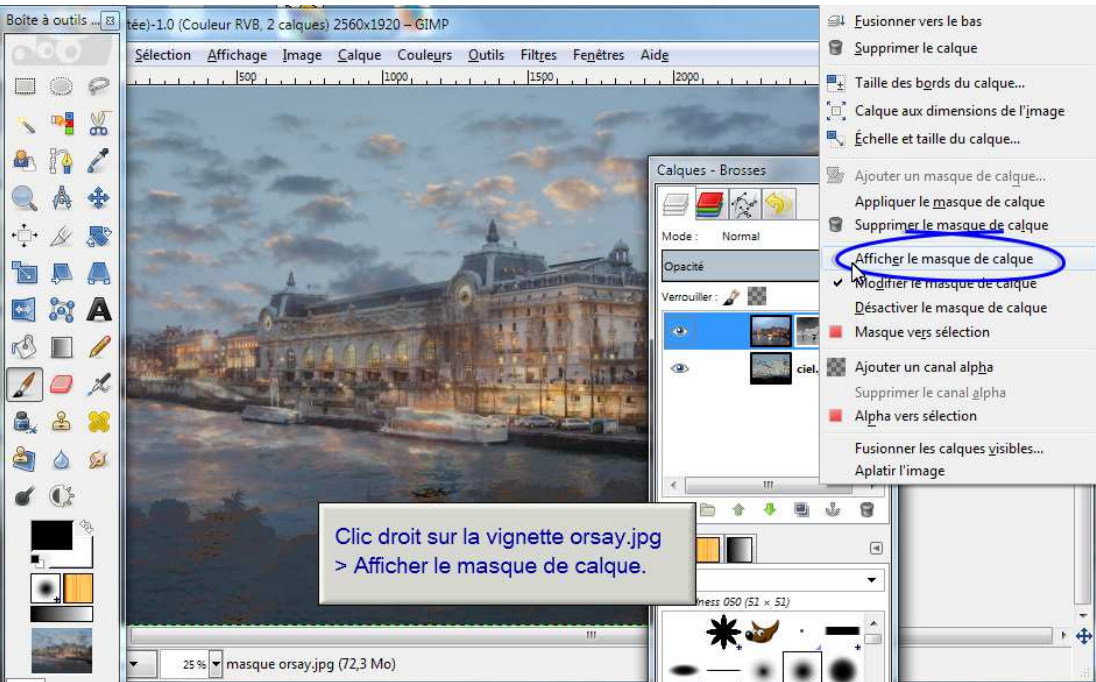
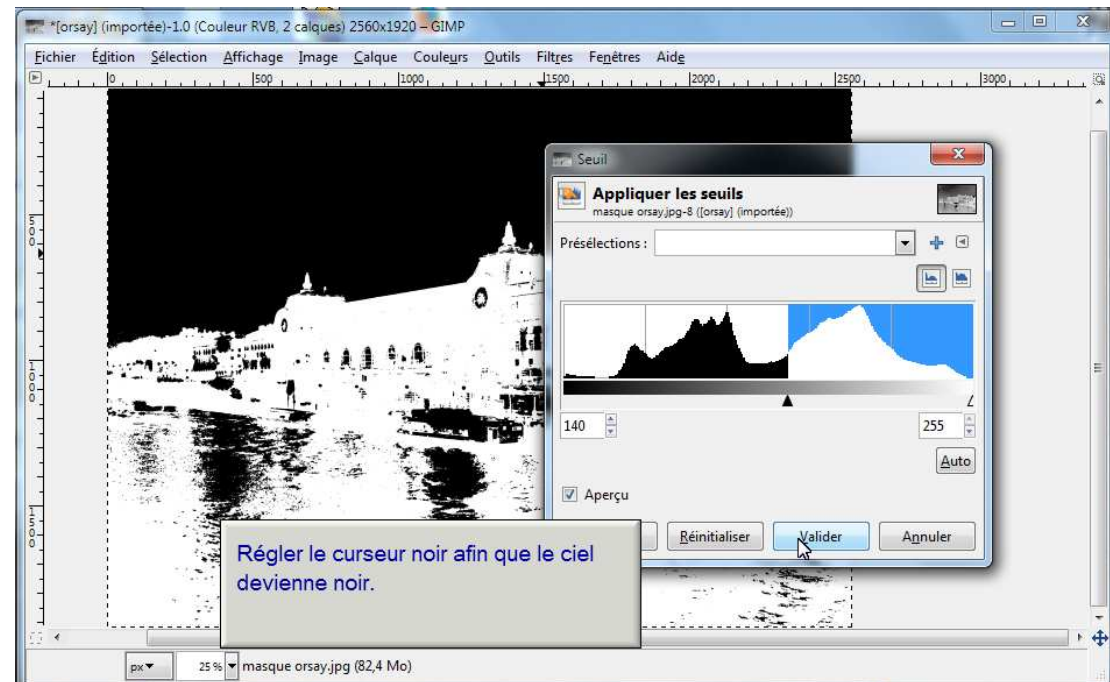
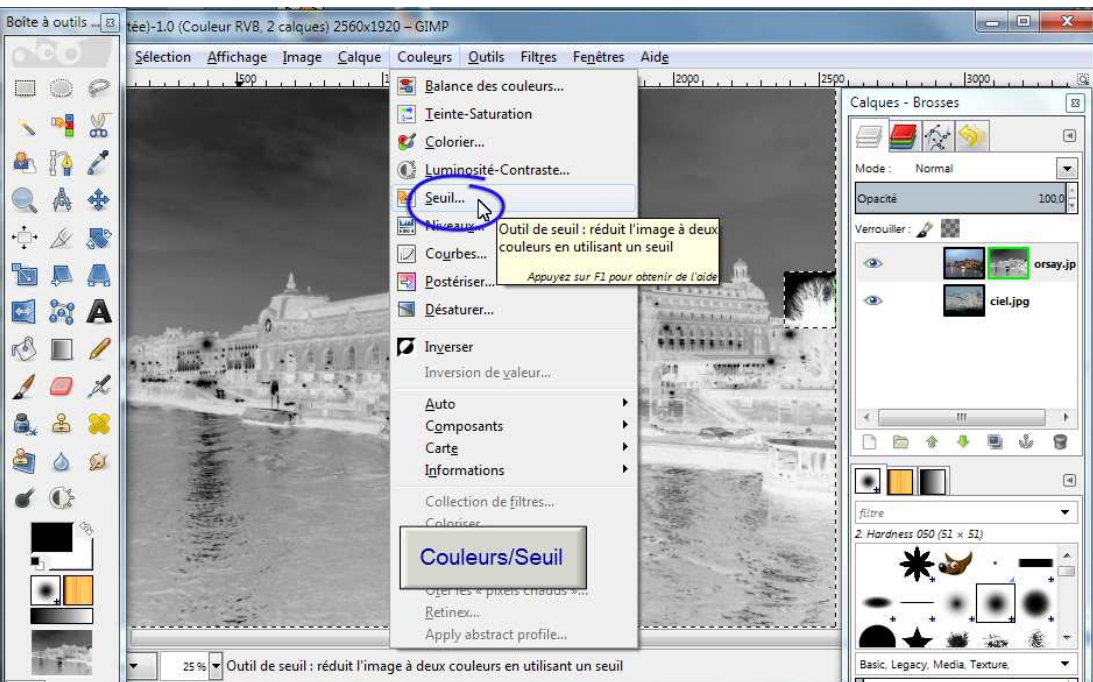
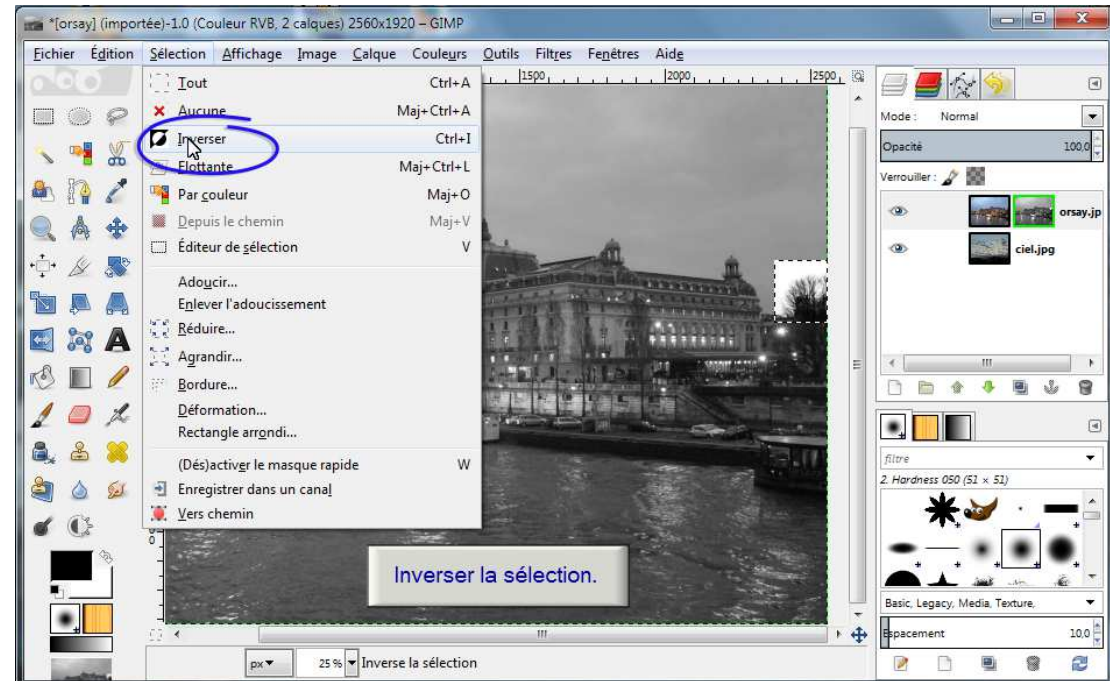
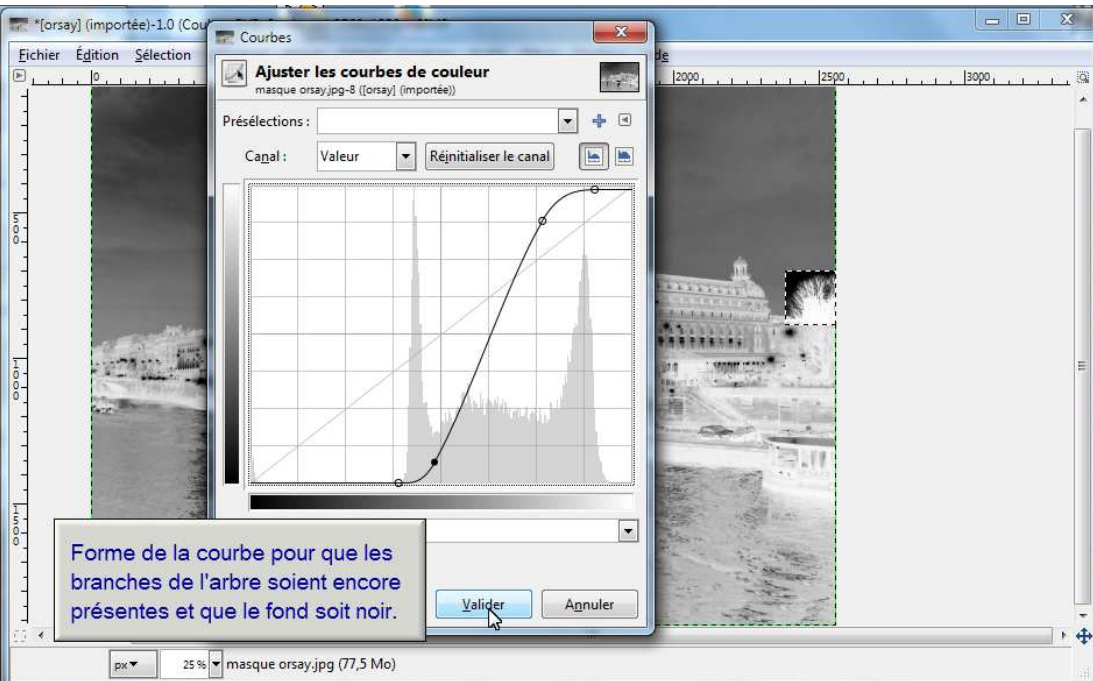
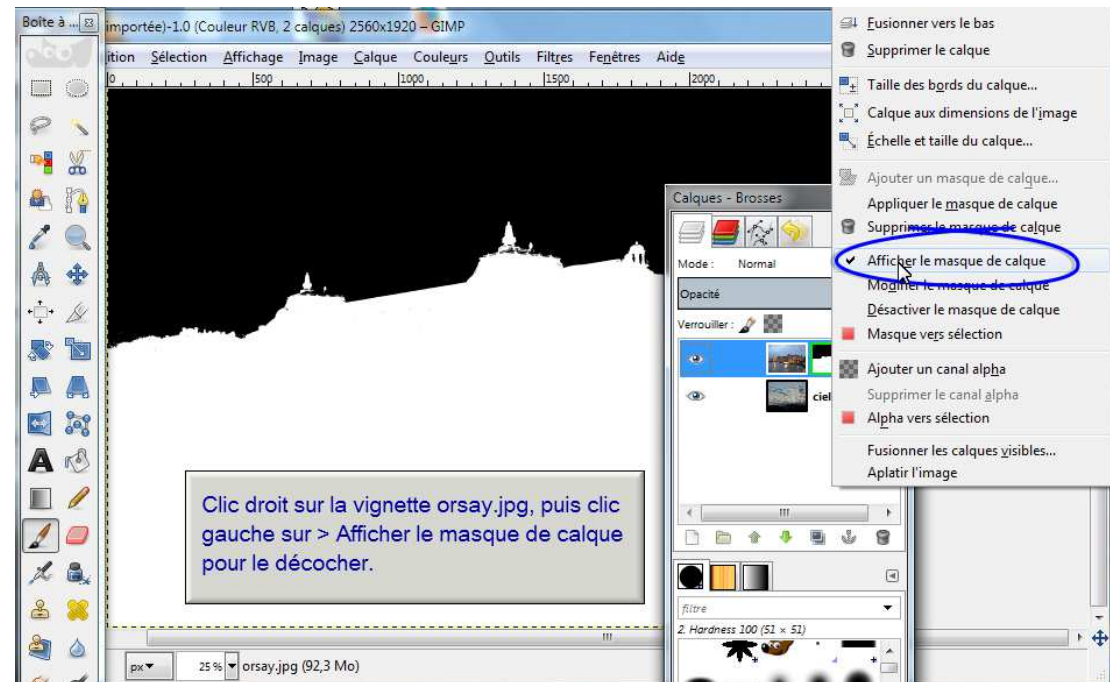
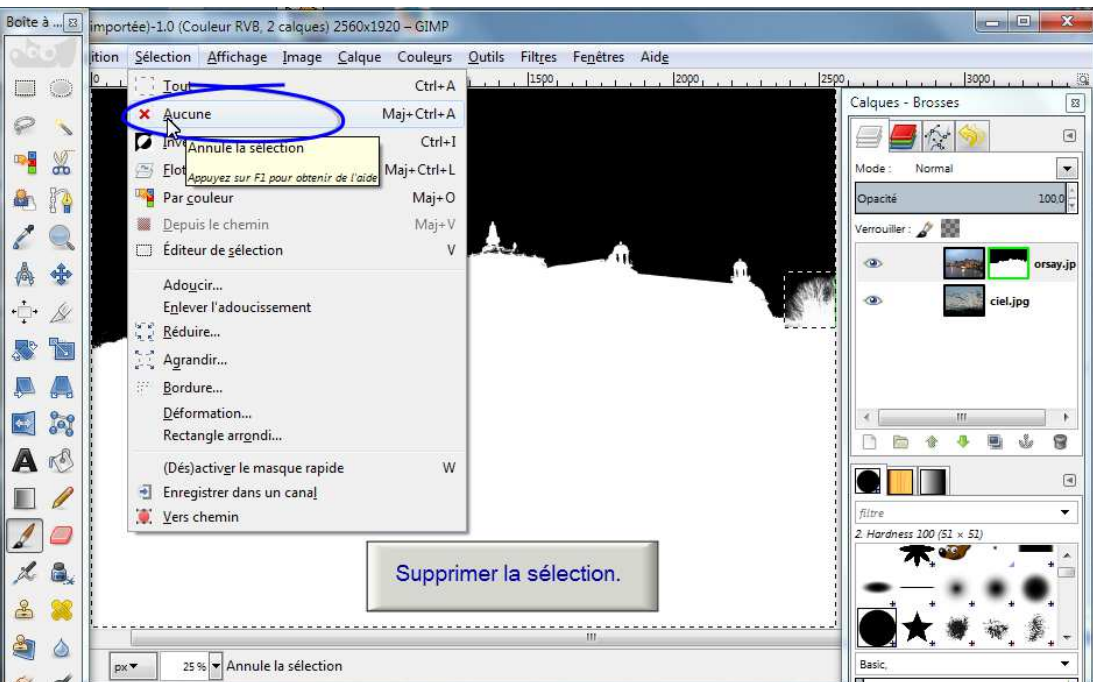
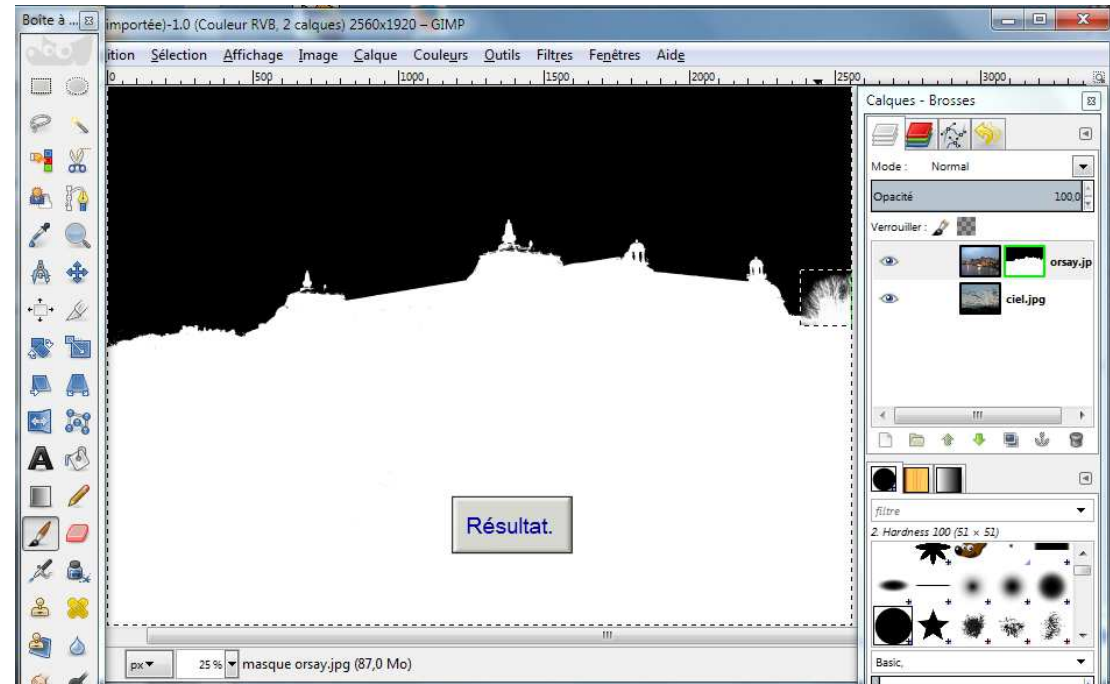
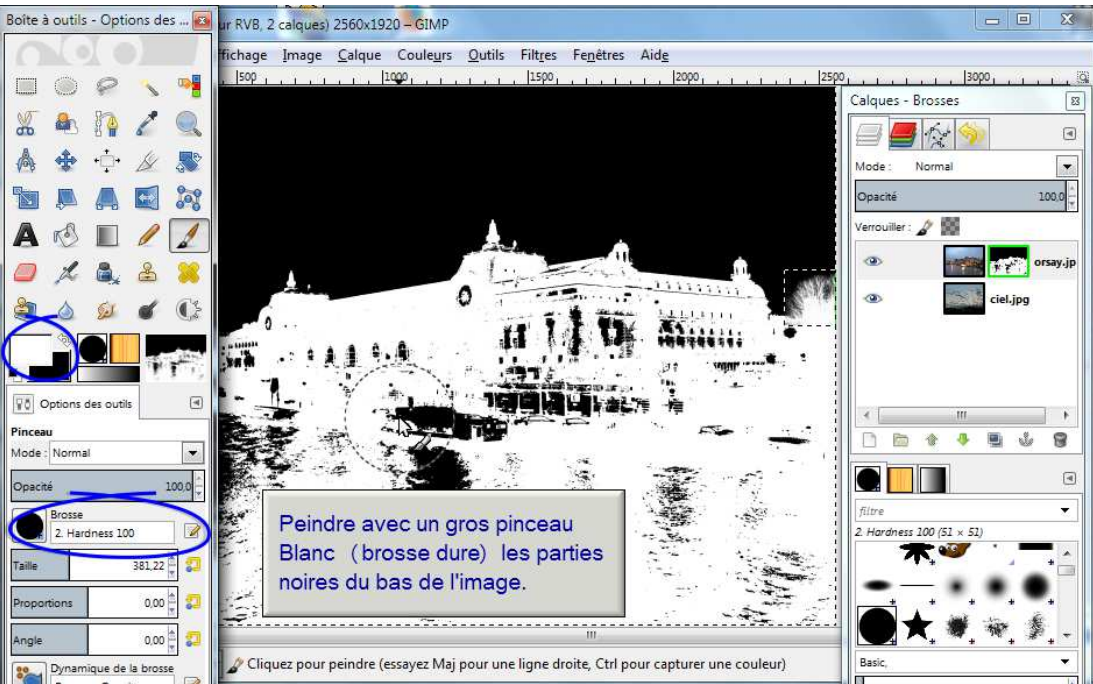


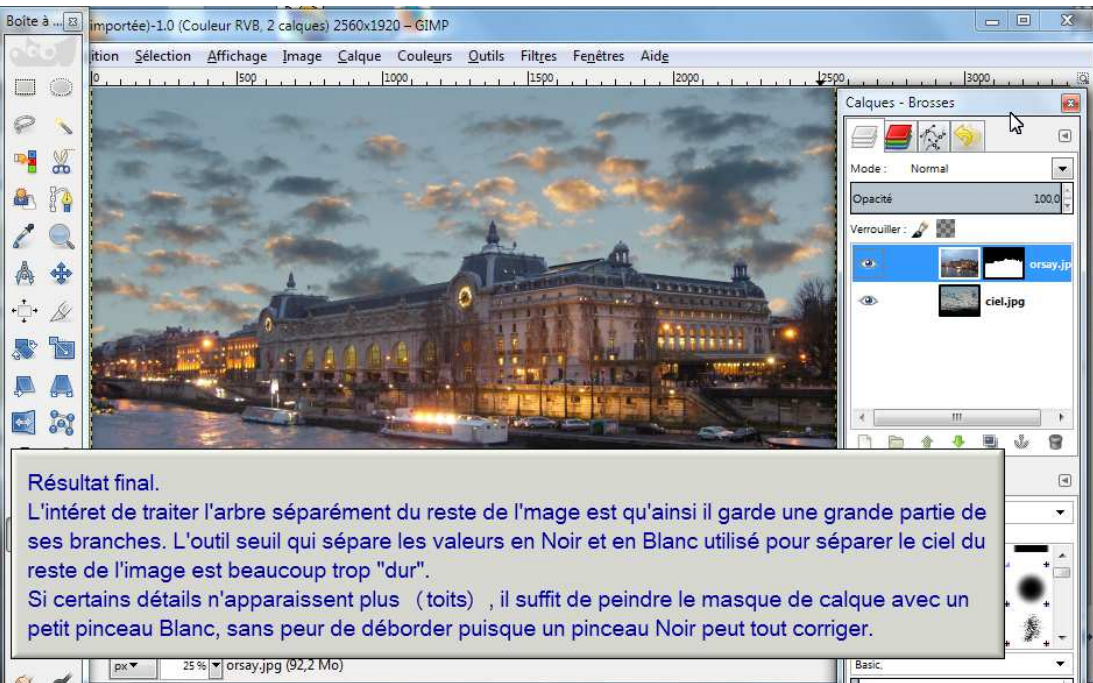
Changer rapidement un ciel avec un masque de calque en tenant compte d'une partie plus délicate (l'arbre)











Résultat final.

L'intérêt de traiter l'arbre séparément du reste de l'image est qu'ainsi il garde une grande partie de ses branches. L'outil seuil qui sépare les valeurs en Noir et en Blanc utilisé pour séparer le ciel du reste de l'image est beaucoup trop "dur".

Si certains détails n'apparaissent plus (toits), il suffit de peindre le masque de calque avec un petit pinceau Blanc, sans peur de déborder puisque un pinceau Noir peut tout corriger.